

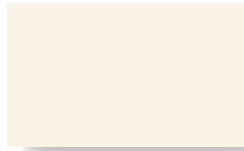
ENVIRONMENTALLY SMART COLORS - DESIGNED ENERGY EFFICIENT



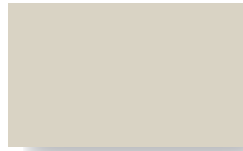
TERRA COTTA



AGED COPPER



SOLAR WHITE



SANDSTONE



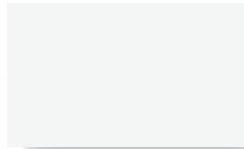
SURREY BEIGE



COLONIAL RED



PATINA GREEN



REGAL WHITE



ASH GRAY



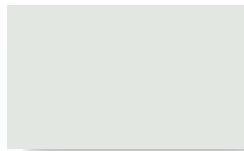
SIERRA TAN



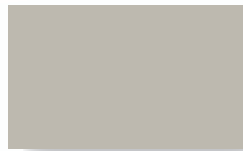
*REGAL RED



*HEMLOCK GREEN



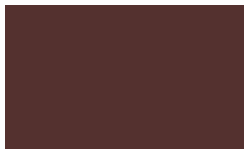
STONE WHITE



DOVE GRAY



MEDIUM BRONZE



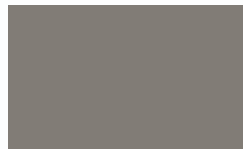
*BURGUNDY



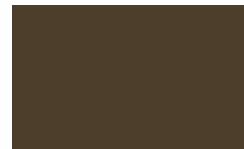
*HARTFORD GREEN



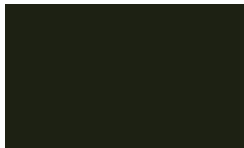
SLATE BLUE



SLATE GRAY



MANSARD BROWN



MATTE BLACK



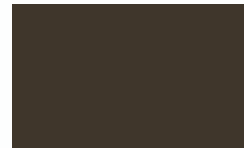
EVERGREEN



*REGAL BLUE

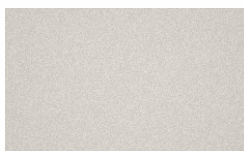


CHARCOAL GRAY



DARK BRONZE

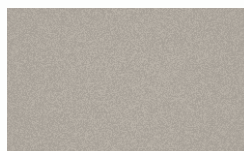
METALLIC COLORS



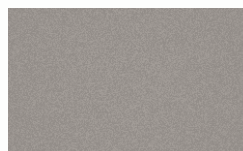
*SILVER



*COPPER



*CHAMPAGNE



*PRE-WEATHERED GALVALUME[®]

NON-PAINTED

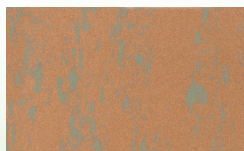


ACRYLIC COATED GALVALUME[®]

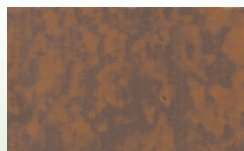
WEATHERED METAL COLORS



*GALV-TEN[™] RAW



*COPPER-TEN[™] RAW



*COR-TEN AZP[®] RAW



Sheffield Metals International

CLEVELAND: 800.283.5262
ATLANTA: 800.929.9359
DALLAS: 877.853.4904
DENVER: 877.375.1477
SAN JOSE: 408.916.3262
www.WhyItsCooler.com

*Available at a slight price premium. Colors shown are matched as accurately as possible, but may vary slightly from finished product. These rich and vibrant colors are produced with either Kynar 500[®] or Hylar 5000[®] resins, which provide superior color retention, and allow us to offer non-prorated coating warranties for most applications. Coating warranty varies for Regal Red, Matte Black, Copper, Silver, Champagne, and Pre-Weathered Galvalume. Metallics are warranted for chip, crack, and peel only. Please contact your representative for more information.

*Also available in Robust.



STOCK AVAILABILITY MATRIX

							GALVALUME			ALUMINUM			
							24 ga.	24 ga.	24 ga.	.032 nom.	.032 nom.	.040 nom.	.050 nom.
							40.375"	44.375"	48.375"	40.500"	48.000"	48.000"	48.000"
		ISR	EMI	3yr.	SRI								
Aged Copper	★	L	0.47	0.85	0.46	53	●		●				
Ash Gray	★	L	0.39	0.84	0.39	41	●		●				
Burgundy	★		0.25	0.85	0.23	23	●		●				
Champagne Metallic	★	L	0.37	0.80	0.35	37	●		●				
Charcoal Gray	★		0.29	0.84	0.28	28	●		●				
Colonial Red	★	L	0.30	0.85	0.29	30	●	●	●	●	●	●	
Copper Metallic	★	L	0.49	0.86	0.47	56	●		●	●			
Dark Bronze	★		0.26	0.84	0.25	24	●	●	●	●	●	●	●
Dove Gray	★	L	0.49	0.86	N/A	56	●		●				
Evergreen	★		0.27	0.86	0.26	26	●	●	●	●	●	●	
Hartford Green	★		0.26	0.85	0.25	24	●		●	●	●		
Hemlock Green	★	L	0.29	0.86	0.29	29	●		●				
Mansard Brown	★		0.27	0.86	0.25	26	●		●		●	●	
Matte Black	★		0.29	0.83	0.27	27	●		●		●		
Medium Bronze	★	L	0.30	0.87	0.28	31	●	●	●	●	●	●	●
Patina Green	★		0.28	0.87	0.28	28	●		●				
Pre-weathered Galvalume®	★		0.30	0.79	0.28	27	●		●				
Regal Blue	★		0.26	0.85	0.25	24	●		●				
Regal Red	★	L	0.42	0.83	0.41	45	●		●				
Regal White	★	L	0.67	0.86	0.67	81	●	●	●	●	●	●	●
Sandstone	★	L	0.54	0.86	0.53	63	●	●	●	●	●	●	●
Sierra Tan	★	L	0.35	0.86	0.34	37	●	●	●	●	●	●	●
Silver Metallic	★	L	0.59	0.79	0.60	67	●		●	●	●	●	●
Slate Blue	★		0.29	0.85	0.28	28	●		●				
Slate Gray	★	L	0.33	0.84	0.33	33	●	●	●	●	●	●	●
Solar White	★	L	0.68	0.85	0.66	82	●		●	●	●	●	●
Stone White	★	L	0.60	0.86	0.56	71	●		●		●		
Surrey Beige	★	L	0.42	0.85	0.41	46	●		●				
Terra Cotta	★	L	0.35	0.86	0.35	37	●		●	●	●		
Acrylic Coated Galvalume®	★	L	0.67	0.14	0.55	56	●		●				
Cor-Ten AZP® Raw			0.32	0.89	N/A	34			●				
Copper-Ten™ Raw			0.45	0.88	N/A	51			●				
Galv-Ten™ Raw			0.49	0.84	N/A	55			●				
Bonderized/Paint Grip													
Custom Colors							▲	▲	▲	▲	▲	▲	▲

NOTES

- All of Sheffield's CoolR metal is painted with a .20 mil primer and .70 -.90 mil Top Coat of 70% Kynar 500 or Hylar 5000. The reverse side has a .20 primer and .30 - .40 backer coating.
- 22 gauge steel available in 44.375" and 48.375" widths upon request.
- .050 aluminum available in 48.000" width upon request.
- For low slope roofing to meet Energy Star requirements the ISR must be ≥0.65. After 3 years, the solar reflectance must be ≥0.50.
- For steep slope roofing to meet Energy Star requirements the ISR must be ≥0.25. After 3 years, the solar reflectance must be ≥0.15.
- For low slope roofing to meet LEED 2009 requirements the SRI must be ≥78.
- For steep slope roofing to meet LEED 2009 requirements the SRI for 100% of the roof must be ≥29.
- Low slope is defined as ≤2:12.
- Steep slope is defined as >2:12.

KEY

●	Stocked Item
▲	Available on Custom Order Basis
★	Energy Star Compliant
L	LEED 2009 Compliant
ISR	Initial Solar Reflectance
EMI	Emissivity
SRI	Solar Reflectance Index

Oil canning is an aesthetic issue and is an inherent part of light gauge cold formed metal products. By using coil that has been processed properly, designing for thermal movement, following stringent specifications for installation and proper handling most oil canning can be eliminated. Oil canning is not grounds for coil/panel rejection.

Galvalume® is a registered trademark of BIEC. Hylar 5000® is a registered trademark of Solvay Solexis, Inc. Kynar 500® is a registered trademark of Atofina, Inc.



valspar

Sheffield Metals International